



Plastic and Metal Components

Product

Plunger Captive Panel Latch

Part Numbers

Plunger Part Number: 3955-00-0017

Grommet Part Number: 3956-00-0017

Features

- Captive latch assembly prevents misplaced parts during installation and usage
- Low cost alternative to metal latches
- No tools required for installation

Applications

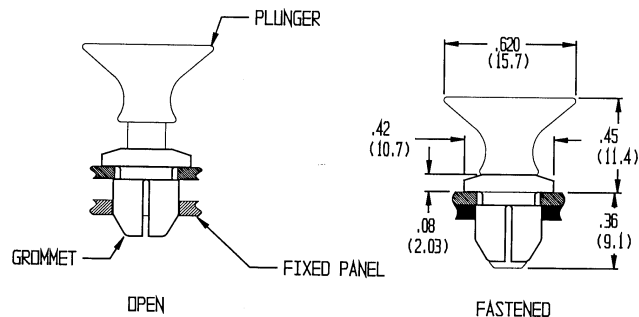
- Metal Enclosures
- Computer Servers
- Medical Equipment
- Telecommunication Cabinets
- Copiers

Technical Data

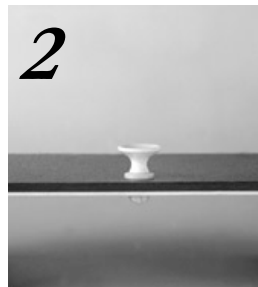
- Material: Natural Acetal

Dimensions for Prepared Panel/Structure

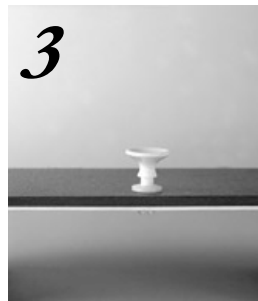
	Removable Panel (R)	Fixed Structure (F)
Panel Thickness	.040" - .065"	.044" - .108"
Punched Hole	.294" - .299"	.316" - .323"



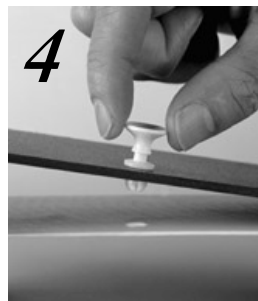
1 Insert grommet into removable panel and insert plunger into grommet.



2 To fasten the removable panel to the fixed structure, push the plunger into the grommet, forcing the prongs to expand and locking the removable panel and the fixed structure together.



3 To separate the panel from the fixed structure, pull the plunger up, allowing the grommet to compress.



4 The latch remains captive in the separated panel. The latch is held captive by the slightly smaller hole in the removable panel.